

# Retinal Dyes

## REFERENCES

### TWIN

#### Different twins: brilliance and safety

Panozzo G.  
95° SOI National Congress, Rome, November 25-28, 2015

#### The importance of a cohesive dye in chromovitrectomy

Mariotti C.  
XII Givre National Congress. Trieste, June 16-18, 2016

#### Negative staining of the vitreous with the use of vital dyes

Mariotti C., Nicolai M., Donati S., Reibaldi M.  
European Journal of Ophthalmology. 28(1): 117-118, 2018

#### Intraoperative efficacy and clinical outcomes of two commercial staining solutions used in idiopathic epiretinal membrane surgery

Iuliano L., Kacerik E., Corbelli E., Bandello F., Codenotti M.  
Int Ophthalmol, 2021

### view ILM

#### New dyes and new light sources in vitreoretinal surgery

Beltrame G.  
Vitreoretinal surgery days, XVIII Ed., Monza, November 4, 2017

# ALCHIMIA

YOUR IDEAS, OUR SOLUTIONS

AL.CHI.MI.A. S.R.L.  
VIALE AUSTRIA, 14  
35020 - PONTE SAN NICOLÒ (PD) - ITALY

+39 049 89.62.074

+39 049 89.62.071

www.alchimiasrl.com  
info@alchimiasrl.com

ophthalmic surgery



LINKEDIN



FACEBOOK



YOUTUBE



AlchiAPP IS BORN  
THE NEW APP FOR THE  
**OPHTHALMIC  
PROFESSIONALS**

Download on the  
**App Store**

GET IT ON  
**Google Play**

# Retinal Dyes

AN INNOVATIVE **PPP** (PROPRIETARY  
PURIFICATION PROCESS) TO OBTAIN THE  
PUREST DYES OF ALL



PURE



SAFE



BIOCOMPATIBLE



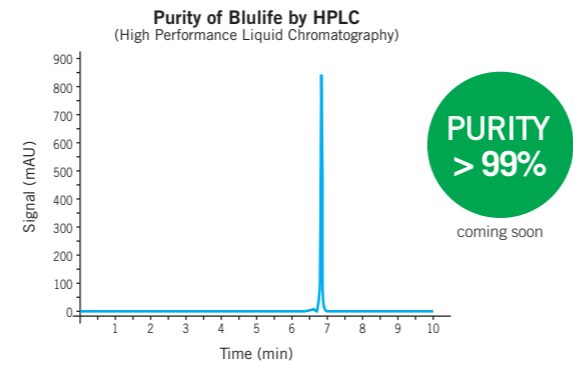
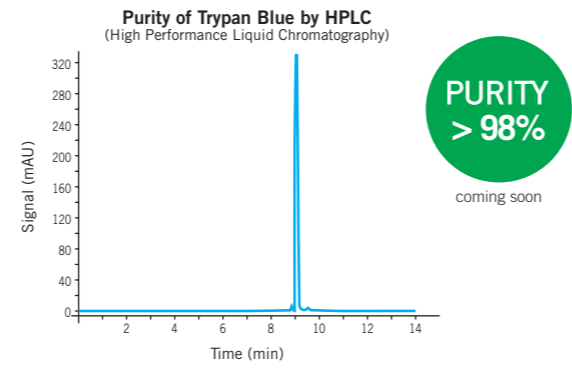
EFFECTIVE STAINING



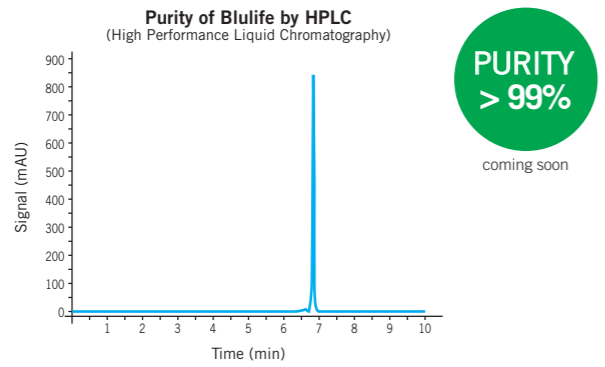
READY TO USE



TWIN, THE PUREST **BLULIFE** AND **TRYPAN BLUE** CURRENTLY AVAILABLE FOR A DOUBLE STAINING SOLUTION CONTAINING A THICKENING AGENT THAT IMPROVES THE CONTACT WITH RETINAL MEMBRANES AND FACILITATES THEIR VISUALIZATION FOR SUBSEQUENT REMOVAL. TWIN IS **"THE CHOICE"** FOR THE STAINING OF THE INNER LIMITING MEMBRANE AND EPIRETINAL MEMBRANES.



	TWIN	view ILM
DYE CONCENTRATION	BLULIFE 0,03% TRYPAN BLUE 0,18%	BLULIFE 0,03%
MAX ABSORBANCE (λ)	584 nm	574 nm
HYDROGENIONIC ACTIVITY (pH units)	7,00 – 7,40	
OSMOLALITY (mOsm/kg)	270 – 330	
BACTERIAL ENDOTOXINS (EU/ml)	< 0,5	
SHELF LIFE	36 months	
REFERENCE	RMB 004-00	RMB 003-00
CONTENTS	6 prefilled syringes of 0,7 ml each	



view ILM, THE PUREST **BLULIFE** CURRENTLY AVAILABLE FOR A STAINING SOLUTION CONTAINING A THICKENING AGENT THAT IMPROVES THE CONTACT WITH INNER LIMITING MEMBRANE AND FACILITATES ITS VISUALIZATION FOR SUBSEQUENT REMOVAL. view ILM IS **"THE CHOICE"** FOR THE STAINING OF INNER LIMITING MEMBRANE.

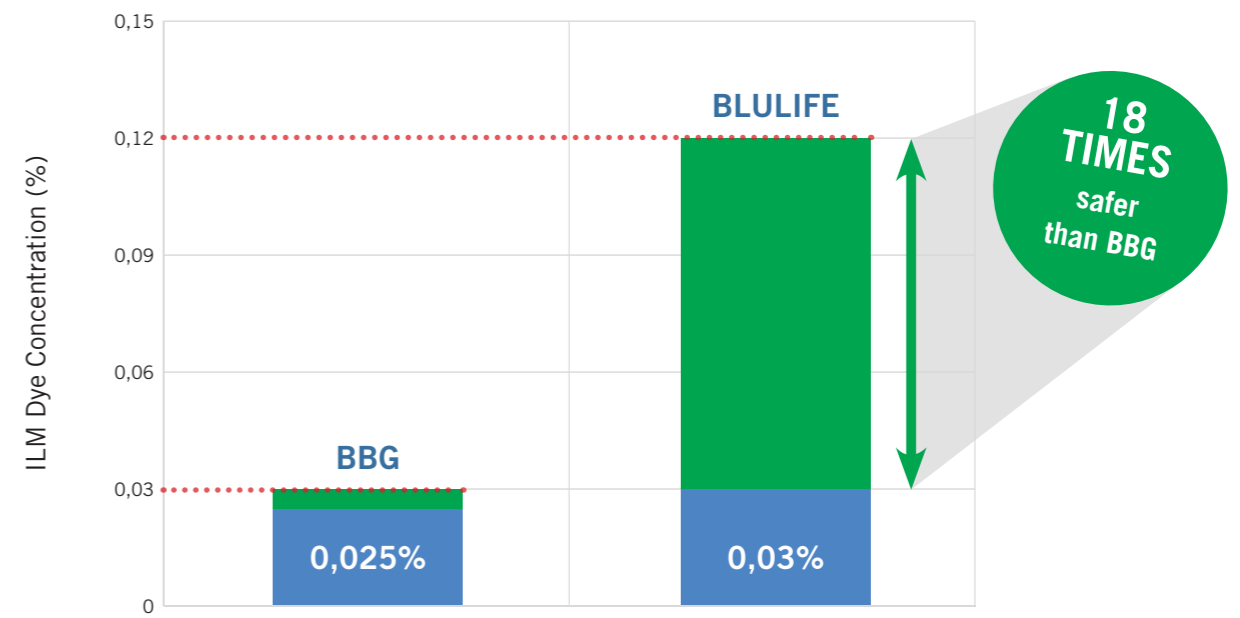
## Technical details

	ALCHIMIA	FLUORON	DORC
PRODUCT	TWIN	BRILLIANT PEEL DUAL DYE	MEMBRANEBLUE DUAL
DYES	BLULIFE TRYPAN BLUE	BBG BROMOPHENOL BLUE	BBG TRYPAN BLUE
DYE CONCENTRATION	BLULIFE 0,03% TRYPAN BLUE 0,18%	BBG 0,025% BROMOPHENOL BLUE 0,13%	BBG 0,025% TRYPAN BLUE 0,15%
DYE PURITY	BLULIFE > 99% TRYPAN BLUE > 98%	BBG N/A* BROMOPHENOL BLUE N/A*	BBG up to 97% TRYPAN BLUE up to 97%
STAINED MEMBRANES	ILM + PVR + ERM	ILM + PVR + ERM	ILM + PVR + ERM
ILM STAINING DYE	BLULIFE	BBG	BBG
ILM DYE SAFE CONCENTRATION	< 0,12%**	< 0,03%**	< 0,03%**

\* N/A = NOT AVAILABLE  
\*\* CYTOTOXICITY TEST BY DIRECT CONTACT ACCORDING TO ISO 10993-5:2009

## Safety chart

The safety chart shows the safety margin existing between the used dye concentration and the toxic one based on the citotoxicity test according to ISO 10993-5:2009. **The safety margin of blulife is 18 times higher than that of BBG.**



- SAFE ILM DYE CONCENTRATION
- SAFETY ZONE (GAP BETWEEN SAFE AND UNSAFE ILM DYE CONCENTRATION)
- UNSAFE ILM DYE CONCENTRATION